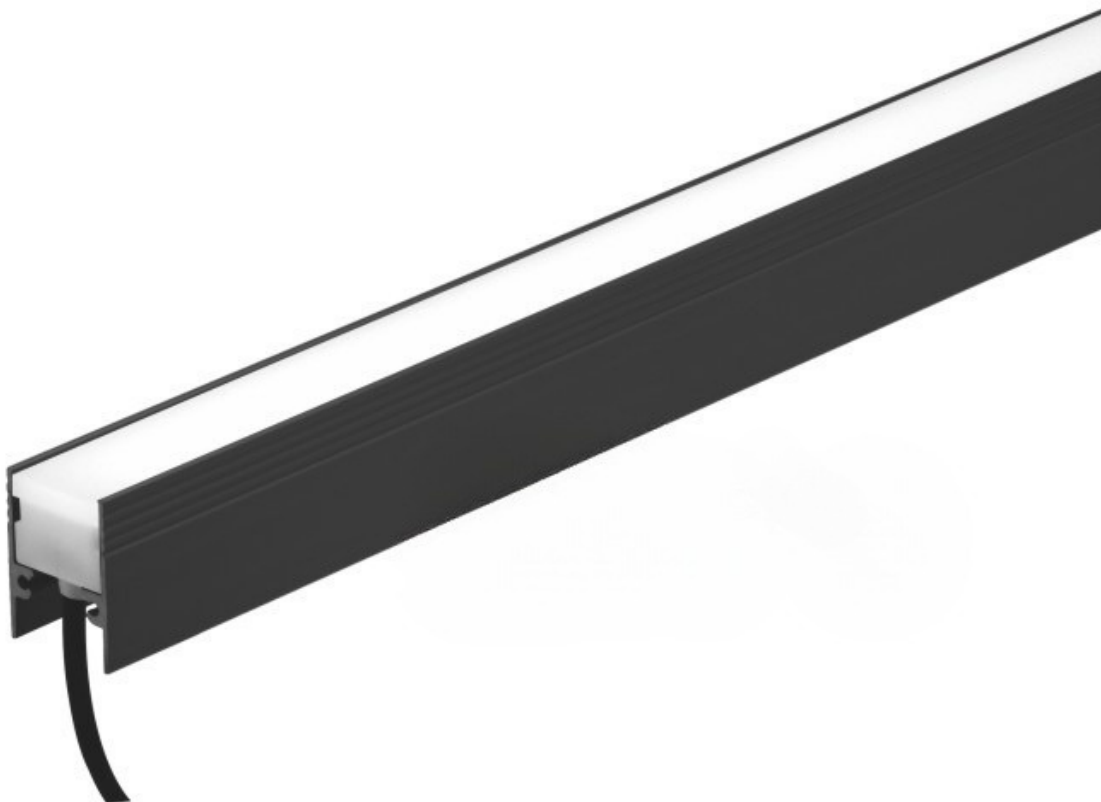


Evanston Series - 3000

[AES-12-SFL04AL3-3000]



Technical Specifications

ATTRIBUTE	VALUES
Wattages	TBC, 30W
Efficacy	90lm/W, 100lm/W

ATTRIBUTE	VALUES
Correlated Colour Index (CRI)	>80, >90, TBC
MacAdam Ellipse (SDCM)	<5, <3
IP Rating	67, TBC
IK Rating	09
Voltage	DC 24V
Light Source & Brand	LED: Osram SMD
Size - Length	Length: 3000mmL
Size - Width	Width: 20.2mmW
Size - Height	Height: 16.2mmH
Mounting Options	Surface Mounted, TBC, Recessed
Beam Angle	TBC, Beam Angle: 110°
Dimming Options	Non-Dimmable, Triac Dimmable, TBC, 0-10V Dimmable, DALI Dimmable
Correlated Colour Temperature (CCT)	CCT: 2700K, CCT: 3000K, CCT: 4000K, CCT: 5000K, CCT: 6000K, CCT: 6500K
Accessories	DMX Controls
Lens Options	TBC, PMMA + Anti-UV Lens
Material of Housing	Housing Material: Aluminium
Operating Temperature	Operating Temperature: -20°C to +40°C

Product Options

ATTRIBUTE	VALUES
Size - Length	Length: 3000mmL
Size - Height	Height: 16.2mmH
Beam Angle	TBC, Beam Angle: 110°
Dimming Options	Non-Dimmable, Triac Dimmable, TBC, 0-10V Dimmable, DALI Dimmable
Accessories	DMX Controls
Material of Housing	Housing Material: Aluminium
Operating Temperature	Operating Temperature: -20°C to +40°C

Certification and Compliance

