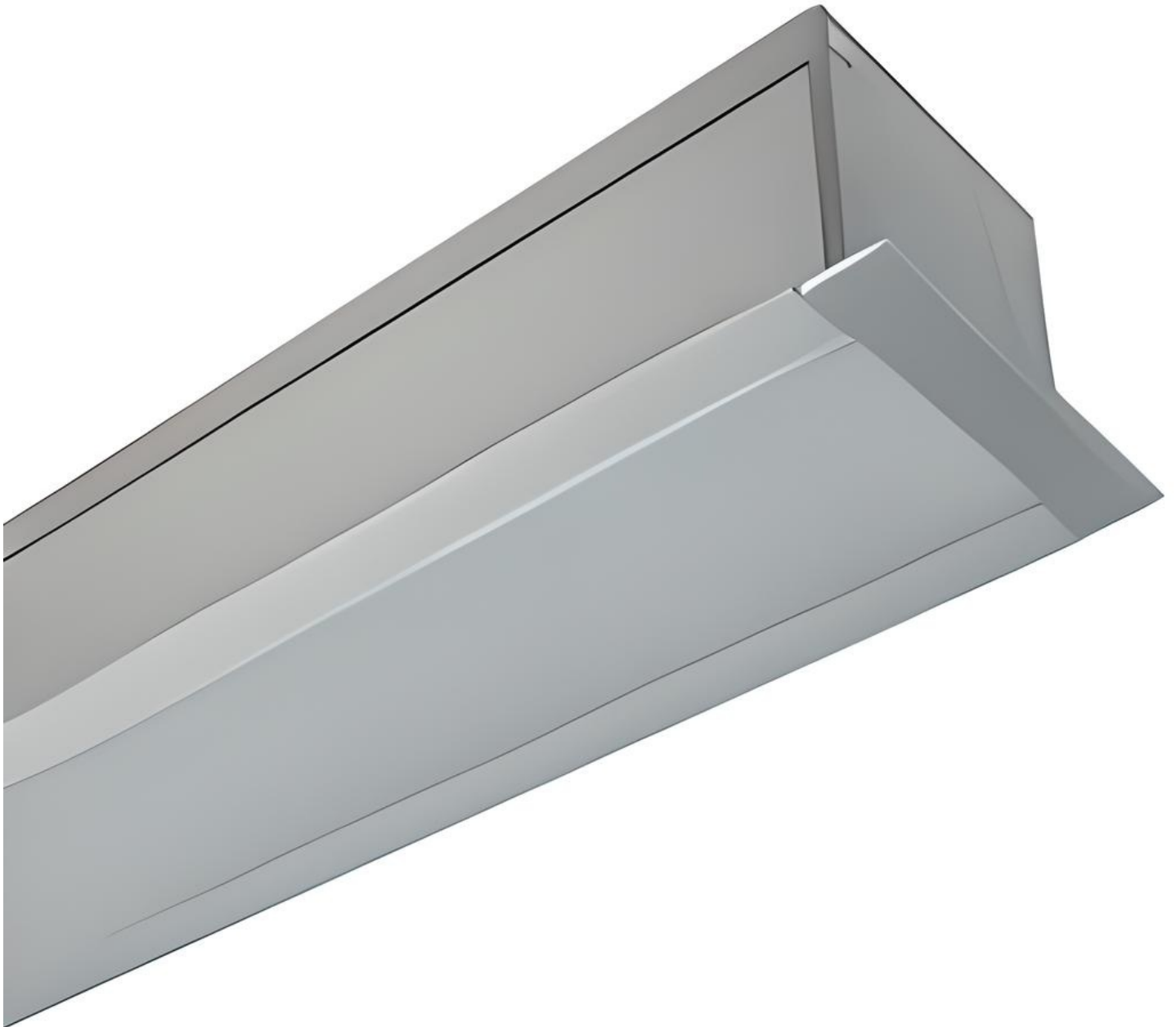


Lalor Series - 8680

[AES-23-8680]



Technical Specifications

ATTRIBUTE	VALUES
Wattages	8W, 10W, 12W, TBC, 14W, 16W, 18W, 20W, 22W, 24W, 26W, 28W, 30W, 32W, 34W, 36W, 38W
Efficacy	80lm/W, 105lm/W
Correlated Colour Index (CRI)	>80, >90, TBC
MacAdam Ellipse (SDCM)	<5, <3
IP Rating	20, 40, TBC
Voltage	AC85-265V
Operating Temperature	Operating Temperature: -20°C to 45°C
Material of Housing	Housing Material: Aluminium
Light Source & Brand	LED: Lumileds
Driver	Driver: Tridonic
Size - Width	Width: 86mmW
Size - Height	Height: 80mmH
Trim / Outer Colour	Trim/Outer: White, Trim/Outer: Black, Trim/Outer: Silver, Trim/Outer: Custom Colour
Mounting Options	TBC, Recessed
Beam Angle	TBC, Beam Angle: 90°, Beam Angle: 120°
Dimming Options	Non-Dimmable, TBC, 0-10V Dimmable, DALI Dimmable
Lens Options	Polycarbonate Diffuser, TBC, MicroPrismatic Diffuser
Correlated Colour Temperature (CCT)	CCT: 3000K, CCT: 3500K, CCT: 4000K, CCT: 5000K
Lifetime	Reported L80 @ 85° >102,000 Hrs - As outlined within IESNA Standards, Projected Lifetime can be up to 6 x the reported lifetimes

Product Options

ATTRIBUTE	VALUES
Operating Temperature	Operating Temperature: -20°C to 45°C
Material of Housing	Housing Material: Aluminium
Size - Height	Height: 80mmH
Beam Angle	TBC, Beam Angle: 90°, Beam Angle: 120°
Dimming Options	Non-Dimmable, TBC, 0-10V Dimmable, DALI Dimmable

Certification and Compliance

