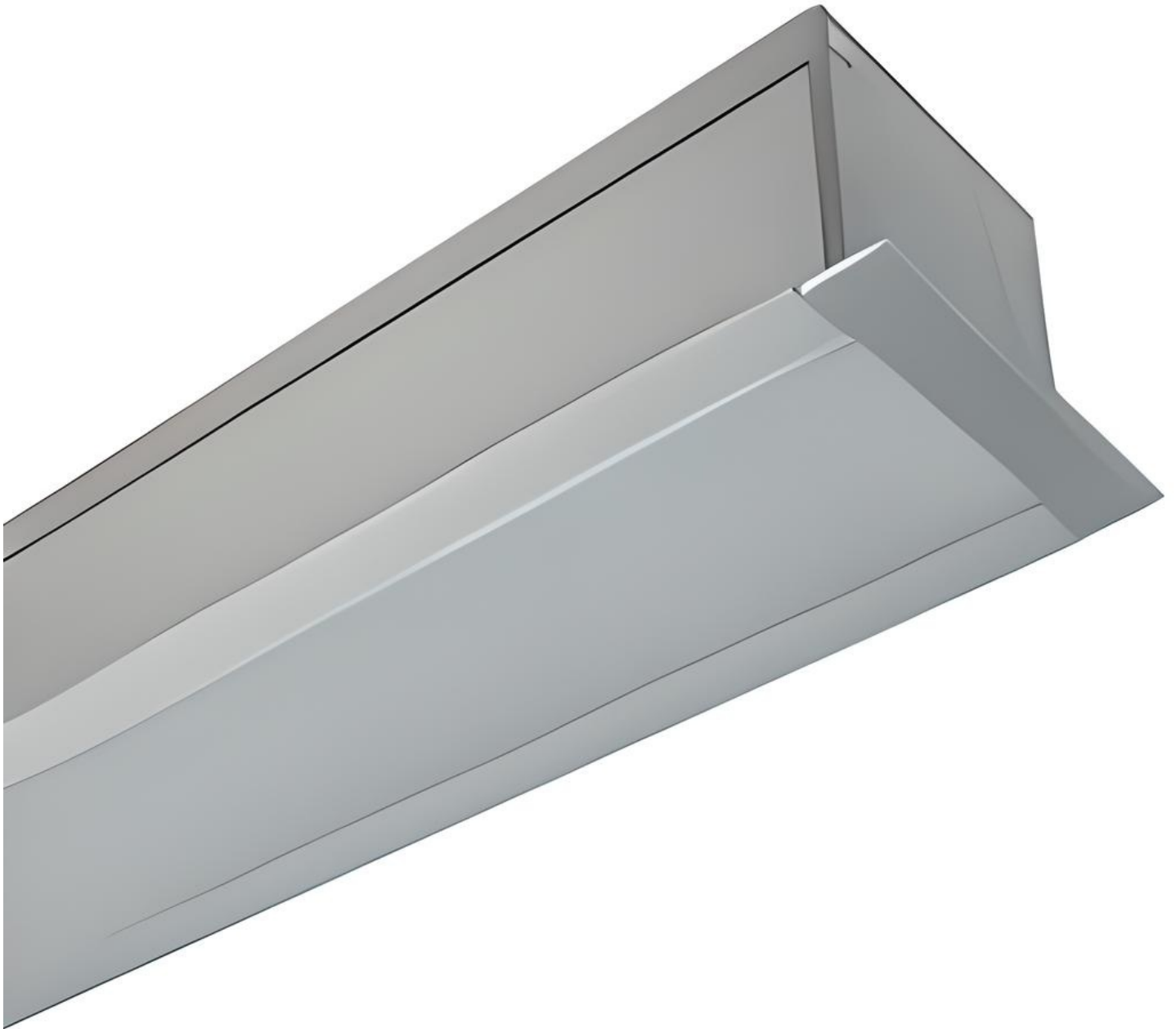


Hart Series - 11280

[AES-23-11280]



Technical Specifications

ATTRIBUTE	VALUES
Wattages	TBC, 28W, 30W, 32W, 34W, 36W, 38W, 40W, 42W, 44W, 46W, 48W, 50W, 52W, 54W, 56W, 58W, 60W, 62W, 64W, 66W, 68W, 70W, 72W, 74W, 76W, 78W
Efficacy	80lm/W, 105lm/W
Correlated Colour Index (CRI)	>80, >90, TBC
MacAdam Ellipse (SDCM)	<5, <3
IP Rating	20, 40, TBC
Voltage	AC85-265V
Operating Temperature	Operating Temperature: -20°C to +45°C
Material of Housing	Housing Material: Aluminium
Light Source & Brand	LED: Lumileds
Driver	Driver: Tridonic
Size - Width	Width: 112mmW
Size - Height	Height: 80mmH
Trim / Outer Colour	Trim/Outer: White, Trim/Outer: Black, Trim/Outer: Silver, Trim/Outer: Custom Colour
Mounting Options	TBC, Recessed
Beam Angle	TBC, Beam Angle: 90°, Beam Angle: 120°
Dimming Options	Non-Dimmable, TBC, 0-10V Dimmable, DALI Dimmable
Lens Options	Polycarbonate Diffuser, TBC, MicroPrismatic Diffuser
Correlated Colour Temperature (CCT)	CCT: 3000K, CCT: 4000K, CCT: 5000K
Lifetime	Reported L80 @ 85° >102,000 Hrs - As outlined within IESNA Standards, Projected Lifetime can be up to 6 x the reported lifetimes

Product Options

ATTRIBUTE	VALUES
Operating Temperature	Operating Temperature: -20°C to +45°C
Material of Housing	Housing Material: Aluminium
Size - Height	Height: 80mmH
Beam Angle	TBC, Beam Angle: 90°, Beam Angle: 120°

ATTRIBUTE	VALUES
Dimming Options	Non-Dimmable, TBC, 0-10V Dimmable, DALI Dimmable

Certification and Compliance

