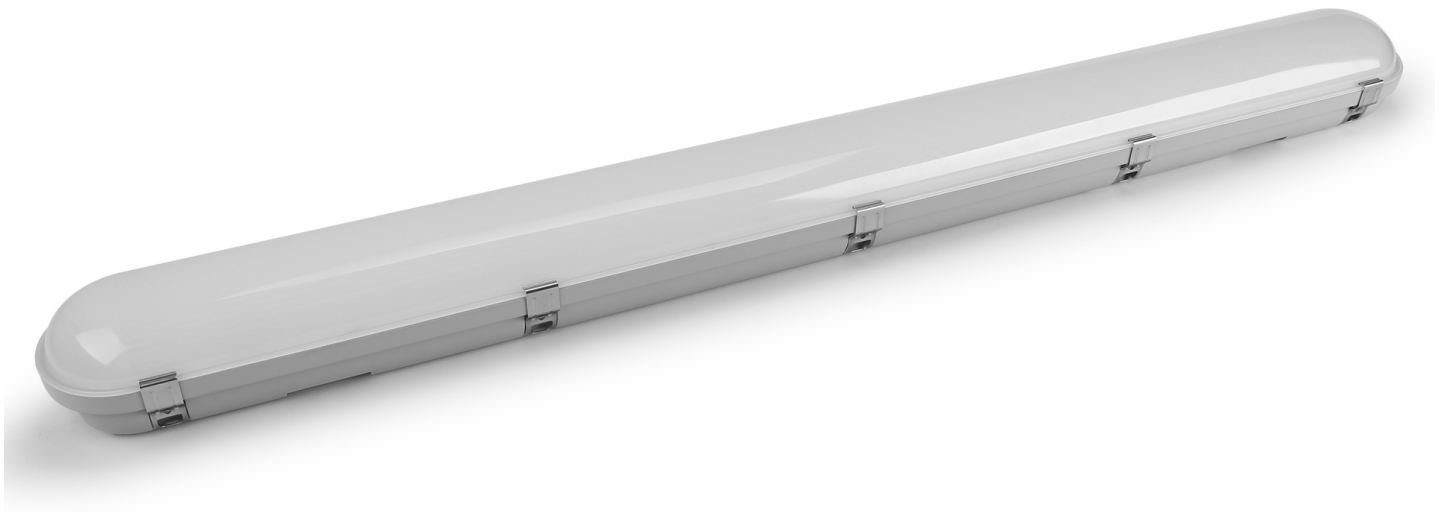


Salisbury Twin Series - 1200



Technical Specifications

ATTRIBUTE	VALUES
Wattages	TBC, Wattage Selectable: 25W / 30W / 35W / 40W
Efficacy	140lm/W, 160lm/W
Correlated Colour Index (CRI)	>80, TBC
IP Rating	65, TBC
IK Rating	08
MacAdam Ellipse (SDCM)	<5
Voltage	AC220-240V
Light Source & Brand	LED: SMD
Driver	Driver: Lifud
Size - Length	Length: 1200mmL
Size - Width	Width: 80mmW
Size - Height	Height: 75mmH
Mounting Options	Surface Mounted, Suspended, TBC
Beam Angle	TBC, Beam Angle: 120°
Dimming Options	Non-Dimmable, TBC, 0-10V Dimmable, DALI Dimmable
Correlated Colour Temperature (CCT)	CCT: 3000K, CCT: 4000K, CCT: 5000K, CCT: 6000K, CCT: 3CCT: 3000K+4000K+5000K
Accessories	Microwave Sensor, 1.2m Suspension Kit, 2.4m Suspension Kit
Material of Housing	Housing Material: Polycarbonate
Material of Optics- Glare control	Optics Material: Polycarbonate
Operating Temperature	Operating Temperature: -15°C to 40°C
Weight	Weight: 11.2kg
Lifetime	Reported L80 @ 105° >54,000 Hrs - As outlined within IESNA Standards, Projected Lifetime can be up to 6 x the reported lifetimes

Product Options

ATTRIBUTE	VALUES
Size - Length	Length: 1200mmL
Size - Height	Height: 75mmH
Beam Angle	TBC, Beam Angle: 120°

ATTRIBUTE	VALUES
Dimming Options	Non-Dimmable, TBC, 0-10V Dimmable, DALI Dimmable
Accessories	Microwave Sensor, 1.2m Suspension Kit, 2.4m Suspension Kit
Material of Housing	Housing Material: Polycarbonate
Operating Temperature	Operating Temperature: -15°C to 40°C

Certification and Compliance

