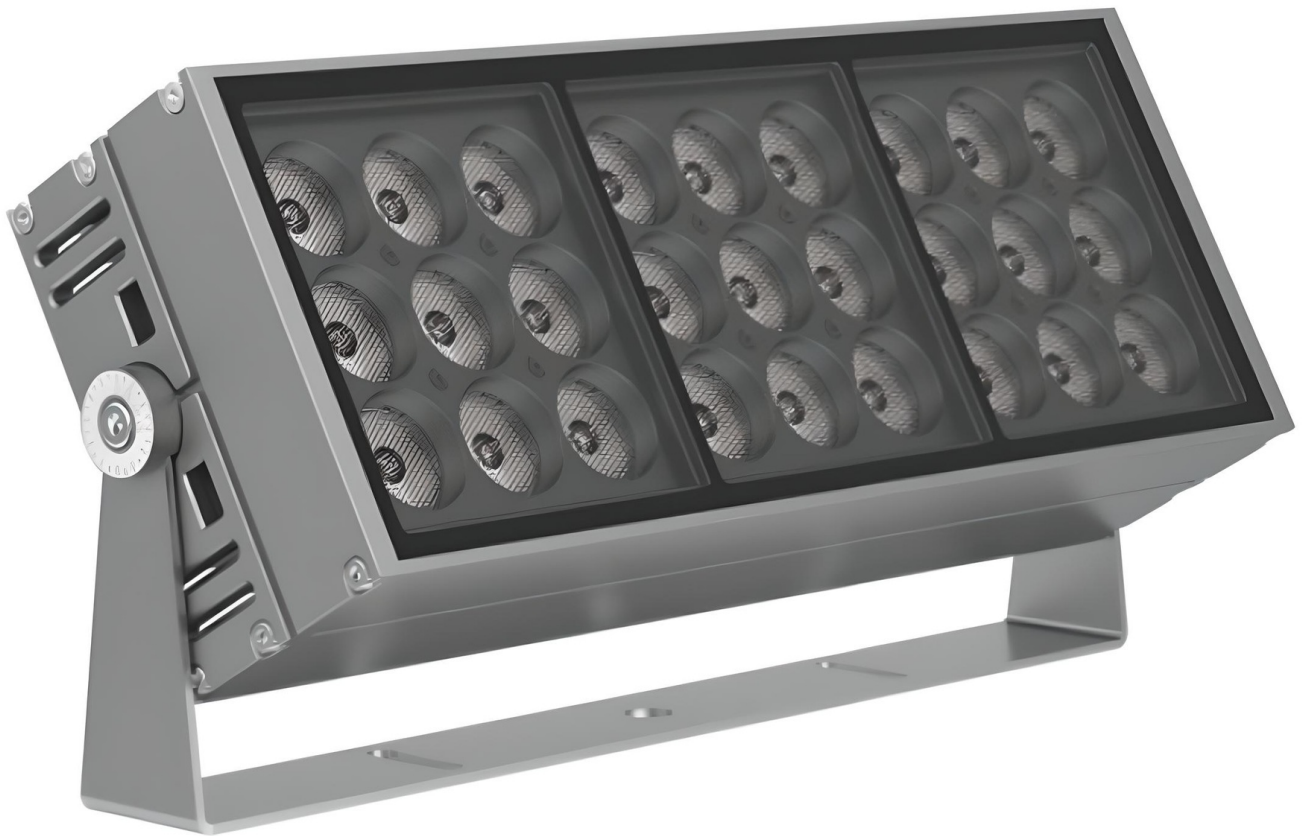


Edmonton Series - 403 - COB

[AES-12-CBD152270]



Technical Specifications

ATTRIBUTE	VALUES
Wattages	TBC, 100W, 135W, 150W
Efficacy	80lm/W
Correlated Colour Index (CRI)	>80, >90, TBC
MacAdam Ellipse (SDCM)	<3
IP Rating	66, TBC
IK Rating	06
Voltage	AC100-305V, 50/60Hz
Light Source & Brand	LED: Cree COB
Weight	Weight: 7.2kg
Size - Length	Length: 403mmL
Size - Width	Width: 90mmW
Size - Height	Height: 212mmH
Driver	Driver: Done
Vertical Rotation	Vertical Rotation: 180°
Beam Angle	TBC, Beam Angle: 3°, Beam Angle: 5°, Beam Angle: 8°, Beam Angle: 10°, Beam Angle: 12°, Beam Angle: 20°, Beam Angle: 24°, Beam Angle: 36°, Beam Angle: 60°, Beam Angle: 10° x 30°
Dimming Options	Non-Dimmable, TBC
Material of Housing	Housing Material: Die-Cast ADC12 Aluminum
Material of Optics-Glare control	Optics Material: 4mm Tempered Glass
Operating Temperature	Operating Temperature: -20°C to +40°C
Trim / Outer Colour	Trim/Outer: White, Trim/Outer: Black, Trim/Outer: Grey
Correlated Colour Temperature (CCT)	CCT: 2700K, CCT: 3000K, CCT: 3500K, CCT: 4000K, CCT: 5000K, CCT: 5700K, CCT: 6500K
Mounting Options	Surface Mounted, TBC
Lens Options	TBC, Honeycomb Louve
Accessories	Hood

ATTRIBUTE	VALUES
Lifetime	Reported L80 @ 85° >63,500 Hrs - As outlined within IESNA Standards, Projected Lifetime can be up to 6 x the reported lifetimes

Product Options

ATTRIBUTE	VALUES
Size - Length	Length: 403mmL
Size - Height	Height: 212mmH
Beam Angle	TBC, Beam Angle: 3°, Beam Angle: 5°, Beam Angle: 8°, Beam Angle: 10°, Beam Angle: 12°, Beam Angle: 20°, Beam Angle: 24°, Beam Angle: 36°, Beam Angle: 60°, Beam Angle: 10° x 30°
Dimming Options	Non-Dimmable, TBC
Material of Housing	Housing Material: Die-Cast ADC12 Aluminum
Operating Temperature	Operating Temperature: -20°C to +40°C
Accessories	Hood

Certification and Compliance

