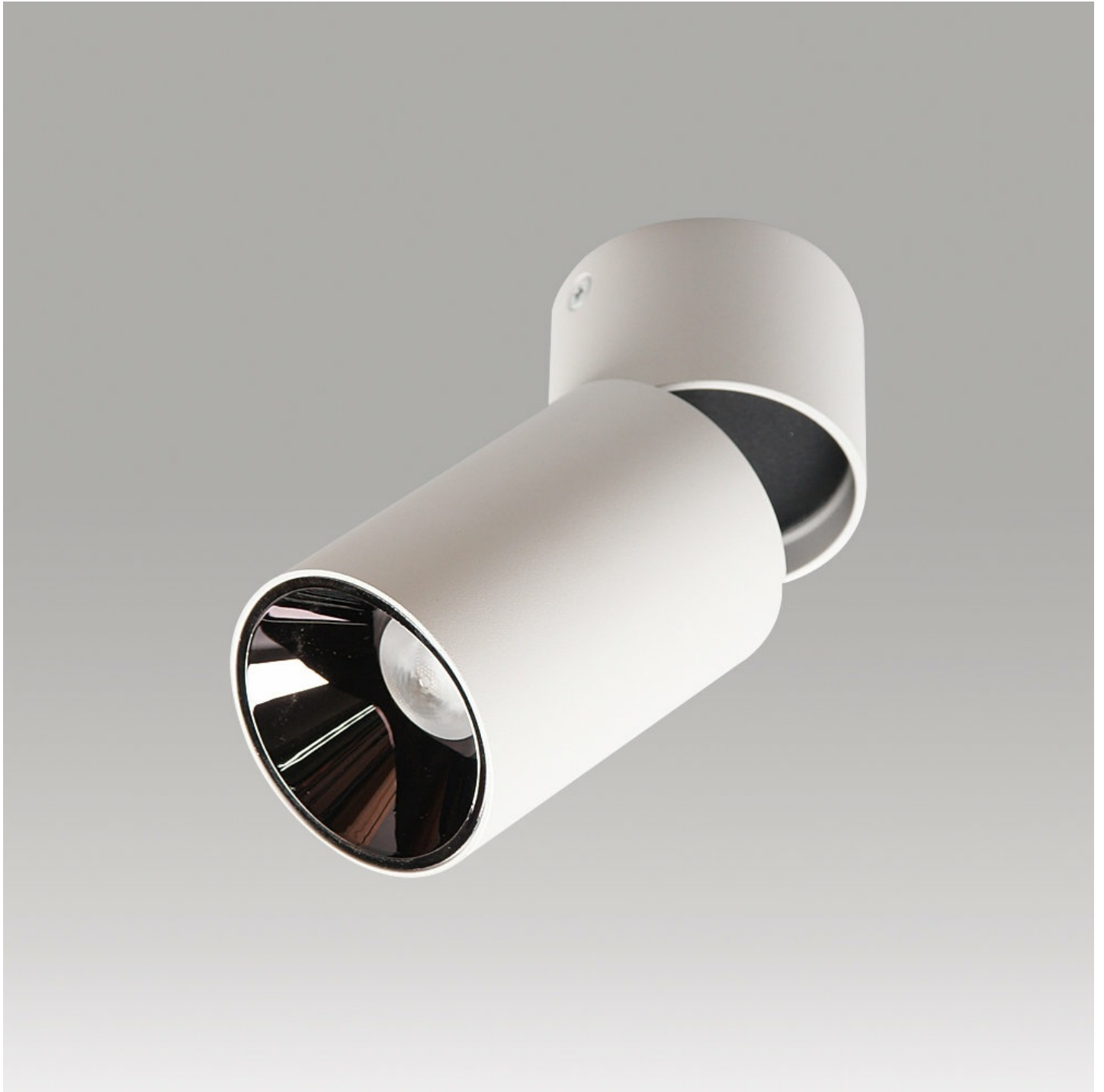


Thyra Series



Technical Specifications

ATTRIBUTE	VALUES
Wattages	8, 10W, 12W, TBC
Efficacy	1080lm/W
Correlated Colour Index (CRI)	>90, >95, >97, TBC
Voltage	AC220-240V
Light Source & Brand	LED: Bridgelux COB
Size - Diameter	Diameter: 76mmØ
Size - Height	Height: 100mmH
Trim / Outer Colour	Trim/Outer: White, Trim/Outer: Black
Mounting Options	Surface Mounted, TBC
Beam Angle	TBC, Beam Angle: 15°, Beam Angle: 24°, Beam Angle: 38°, Beam Angle: 60°, Beam Angle: 90°
Dimming Options	Non-Dimmable, Triac Dimmable, TBC, 0-10V Dimmable, DALI Dimmable
Correlated Colour Temperature (CCT)	CCT: 2700K, CCT: 3000K, CCT: 4000K, CCT: 5000K, CCT: 5700K, CCT: 6000K, CCT: 6500K
Material of Housing	Housing Material: Die Cast Aluminium
Operating Temperature	Operating Temperature: -20°C to +40°C

Product Options

ATTRIBUTE	VALUES
Size - Diameter	Diameter: 76mmØ
Size - Height	Height: 100mmH
Beam Angle	TBC, Beam Angle: 15°, Beam Angle: 24°, Beam Angle: 38°, Beam Angle: 60°, Beam Angle: 90°
Dimming Options	Non-Dimmable, Triac Dimmable, TBC, 0-10V Dimmable, DALI Dimmable
Material of Housing	Housing Material: Die Cast Aluminium
Operating Temperature	Operating Temperature: -20°C to +40°C

Certification and Compliance

