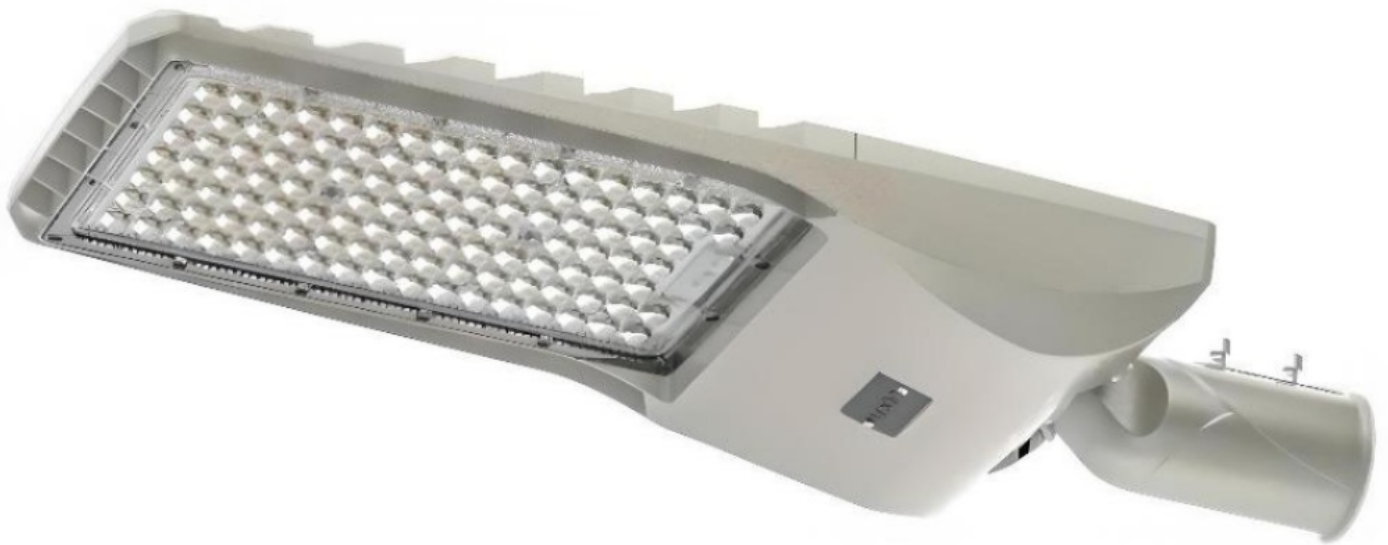


Flinders Series - 200-240W

[AES-03-PL01-G10-200-240W]



Technical Specifications

ATTRIBUTE	VALUES
Wattages	TBC, 200W, 240W
Efficacy	170lm/W
Correlated Colour Index (CRI)	>70, >80, TBC
MacAdam Ellipse (SDCM)	<6
IP Rating	66, TBC
IK Rating	10
Voltage	AC120-277V, 50/60Hz
Light Source & Brand	LED: SMD 5050
Driver	Driver: SOSEN
Size - Length	Length: 675mmL
Size - Width	Width: 268mmW
Size - Height	Height: 106mmH
Spigot - Diameter	Spigot: 64mm Ø
Weight	Weight: 4.6kg
Tilt	Tilt: ±15°
Beam Angle	TBC, Beam Angle: Type II-M - 155° x 70°
Dimming Options	Non-Dimmable, TBC, 0-10V Dimmable, DALI Dimmable
Material of Housing	Housing Material: Aluminum Alloy
Material of Optics- Glare control	Optics Material: Polycarbonate Lens
Corrosion Resistance	Corrosion Resistance: C5
Operating Temperature	Operating Temperature: -40°C to +50°C
Trim / Outer Colour	Trim/Outer: Black, Trim/Outer: Grey, Trim/Outer: Bronze
Correlated Colour Temperature (CCT)	CCT: 3000K, CCT: 4000K, CCT: 5000K, CCT: 5700K
Mounting Options	TBC, Pole Mounted, Wall Mount Bracket
Accessories	PhotoElectric Cell, 10kV Surge Protection Device, 20kV Surge Protection Device, Short Circuit Cap, NEMA 3pin Socket
Lifetime	Reported L80 @ 85° >102,000 Hrs - As outlined within IESNA Standards, Projected Lifetime can be up to 6 x the reported lifetimes

Product Options

ATTRIBUTE	VALUES
Size - Length	Length: 675mmL
Size - Height	Height: 106mmH
Beam Angle	TBC, Beam Angle: Type II-M - 155° x 70°
Dimming Options	Non-Dimmable, TBC, 0-10V Dimmable, DALI Dimmable
Material of Housing	Housing Material: Aluminum Alloy
Operating Temperature	Operating Temperature: -40°C to+50°C
Accessories	PhotoElectric Cell, 10kV Surge Protection Device, 20kV Surge Protection Device, Short Circuit Cap, NEMA 3pin Socket

Certification and Compliance

