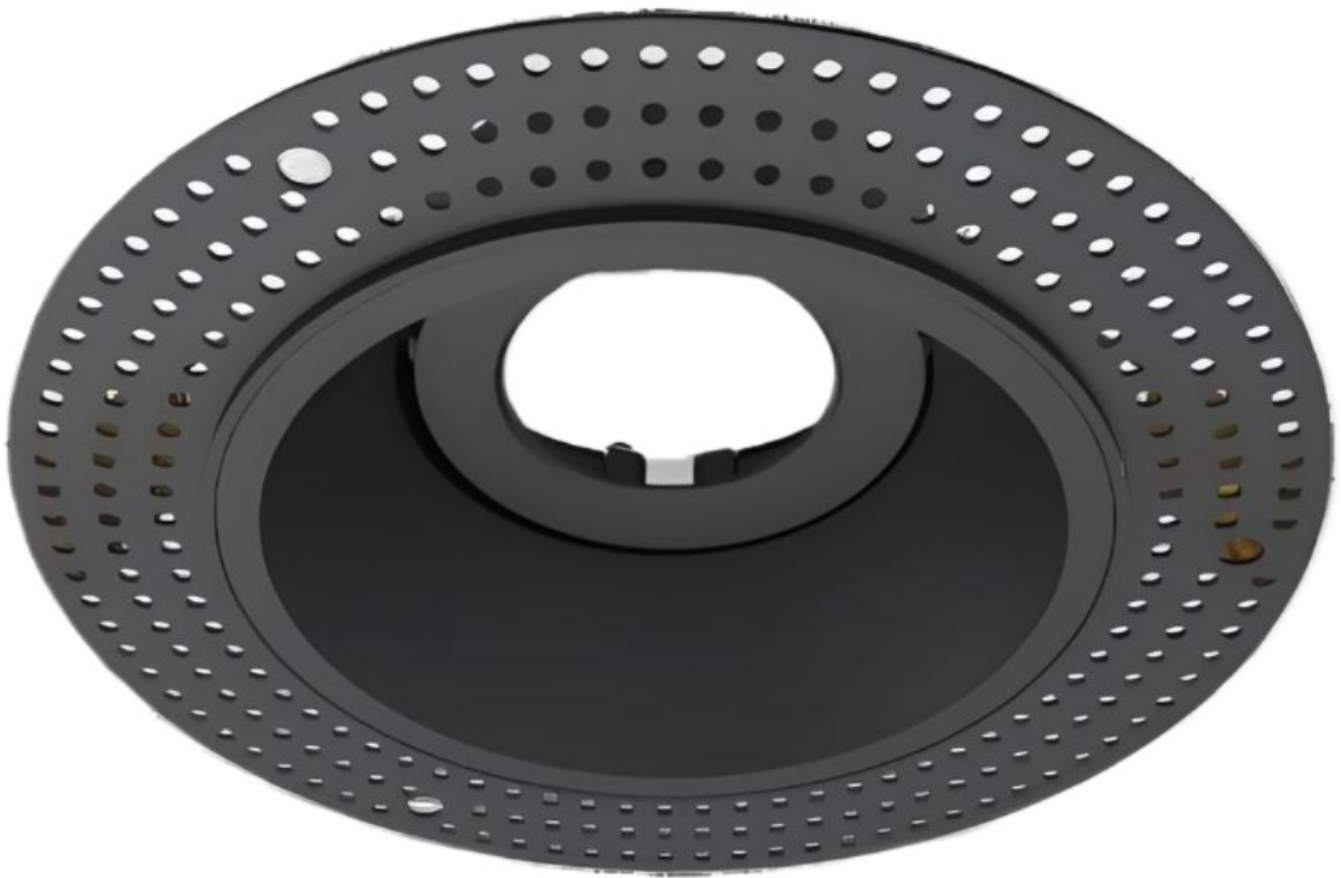


Switch Downlight Kit - TRA2



Technical Specifications

ATTRIBUTE	VALUES
-----------	--------

ATTRIBUTE	VALUES
Wattages	3W, 5W, 7W, 9W, 13W, TBC, 15W, 18W
Module	X2A, X2A-H, X3A, X3A-H, X15A, X15A-H, X20A
Efficacy	107lm/W, 111lm/W, 121lm/W, 122lm/W, 123lm/W, 124lm/W, 133lm/W, 136lm/W, 140lm/W, 166lm/W
Correlated Colour Index (CRI)	>80, >90, >97, TBC
MacAdam Ellipse (SDCM)	<3
IP Rating	20, 44, 54, 65, TBC
Voltage	AC200-240V, 50/60Hz
Light Source & Brand	LED: Citizen COB
Driver	Driver: Lifud, Driver: BOKE, Driver: AIDimming
Size - Diameter	Diameter: 140mmØ
Size - Height	Height: 78mmH, Height: 105mmH, Height: 113mmH, Height: 128mmH
Cut Out Size - Diameter	Cut Out: 100mmØ
Weight	Weight: 0.19kg, Weight: 0.275kg, Weight: 0.4kg, Weight: 0.47kg
Tilt	Tilt: 29°
Beam Angle	TBC, Beam Angle: 15°, Beam Angle: 20°, Beam Angle: 24°, Beam Angle: 30°, Beam Angle: 38°, Beam Angle: 55°, Beam Angle: 60°
Dimming Options	Non-Dimmable, Triac Dimmable, TBC, 0-10V Dimmable, DALI Dimmable
Material of Housing	Housing Material: Aluminium
Material of Optics- Glare control	Optics Material: Aluminium & Glass
Operating Temperature	Operating Temperature: -20°C to 45°C
Trim / Outer Colour	Trim/Outer: White, Trim/Outer: Black, Trim/Outer: Custom Colour
Reflector / Internal Colour	Reflector/Internal: White, Reflector/Internal: Black, Reflector/Internal: Custom Colour
Correlated Colour Temperature (CCT)	CCT: 2700K, CCT: 3000K, CCT: 3500K, CCT: 4000K, CCT: 5000K, CCT: 6000K, CCT: 6700K
Mounting Options	TBC, Recessed
Lens Options	Honeycomb, TBC, Frosted Centre
Lifetime	Reported L80 @ 55° >55,000 Hrs - As outlined within IESNA Standards, Projected Lifetime can be up to 6 x the reported lifetimes

Product Options

ATTRIBUTE	VALUES
Size - Diameter	Diameter: 140mmØ
Size - Height	Height: 78mmH, Height: 105mmH, Height: 113mmH, Height: 128mmH
Beam Angle	TBC, Beam Angle: 15°, Beam Angle: 20°, Beam Angle: 24°, Beam Angle: 30°, Beam Angle: 38°, Beam Angle: 55°, Beam Angle: 60°
Dimming Options	Non-Dimmable, Triac Dimmable, TBC, 0-10V Dimmable, DALI Dimmable
Material of Housing	Housing Material: Aluminium
Operating Temperature	Operating Temperature: -20°C to 45°C

Certification and Compliance

