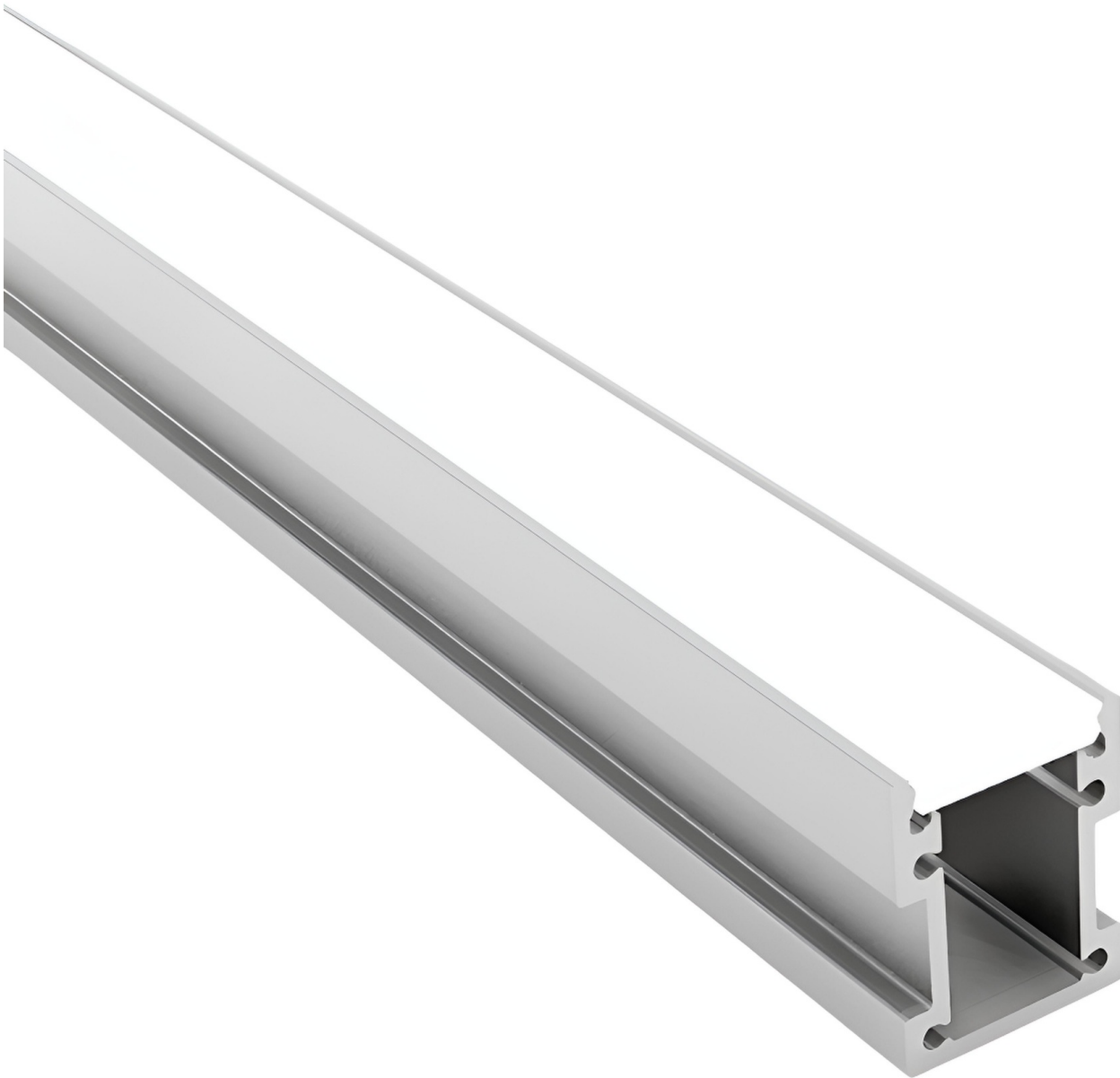


# Profile - 2126

[AES-06-LS2126]



## Technical Specifications

| ATTRIBUTE                           | VALUES  |
|-------------------------------------|---|
| Wattages                            | 4.8W, 9.6W, 12W, TBC, 16.8W   |
| Correlated Colour Temperature (CCT) | CCT: 2300K, CCT: 2700K, CCT: 3000K, CCT: 3500K, CCT: 4000K, CCT: 6000K  |
| Lumens                              | 112lm/W @ 2300K, 129lm/W @ 2700K, 136lm/W @ 3000K, 139lm/W @ 3500K, 139lm/W @ 4000K, 136lm/W @ 6000K                            |
| Product Code                        | C8200-24v-8mm   |
| Cutting Unit                        | 5mm   |
| Correlated Colour Index (CRI)       | >90   |
| MacAdam Ellipse (SDCM)              | <2  |
| Light Source & Brand                | LED: SMD  |
| IP Rating                           | 20, 65, 67, TBC   |
| Voltage                             | DC 24V  |
| LED's p/m                           | 200   |
| Size - Width                        | Width: 21.4mmW  |
| Size - Height                       | Height: 27mmH   |
| Trim / Outer Colour                 | Trim/Outer: Silver  |
| Mounting Options                    | Surface Mounted, TBC, Recessed  |
| Beam Angle                          | Beam Angle: 110°  |
| Dimming Options                     | Non-Dimmable, Triac Dimmable, TBC, 0-10V Dimmable, DALI Dimmable  |
| Operating Temperature               | Operating Temperature: -25°C to 40°C  |
| Lifetime                            | Reported L80 @ 85° >60,000 Hrs - As outlined within IESNA Standards, Projected Lifetime can be up to 6 x the reported lifetimes |

## Product Options

| ATTRIBUTE             | VALUES   |
|-----------------------|--|
| Size - Height         | Height: 27mmH  |
| Beam Angle            | Beam Angle: 110°   |
| Dimming Options       | Non-Dimmable, Triac Dimmable, TBC, 0-10V Dimmable, DALI Dimmable |
| Operating Temperature | Operating Temperature: -25°C to 40°C                             |

## Certification and Compliance

