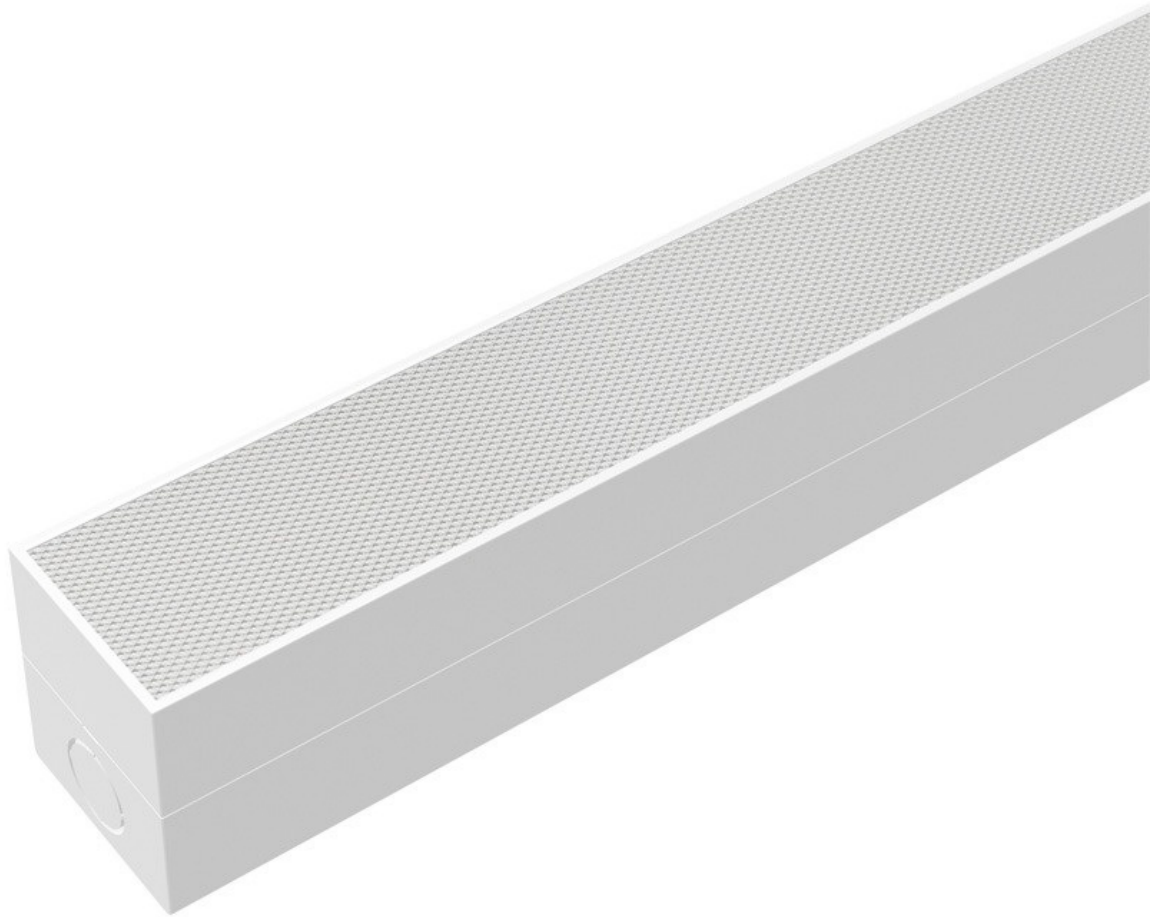


Madura Series - 551200

[AES-25-BT500-04W-KN1-40X01]



Technical Specifications

ATTRIBUTE	VALUES
Wattages	TBC, Wattage Selectable: 25W / 30W / 35W
Efficacy	120lm/W
Correlated Colour Index (CRI)	>80
IP Rating	65
IK Rating	08
MacAdam Ellipse (SDCM)	<5, <3
Voltage	AC220-240V
Light Source & Brand	LED: SMD
Driver	Driver: Boke Flicker Free
Size - Length	Length: 1200mmL
Size - Width	Width: 55mmW
Size - Height	Height: 64mmH
Weight	1.35kg
Mounting Options	Surface Mounted, Suspended, TBC
Beam Angle	Beam Angle: 120°
Dimming Options	Non-Dimmable, TBC, DALI Dimmable
Correlated Colour Temperature (CCT)	CCT: 3000K, CCT: 4000K, CCT: 5000K, CCT: 6000K, CCT: 3CCT: 3000K+4000K+5000K
Accessories	Microwave Sensor, 1.2m Suspension Kit, 2.4m Suspension Kit, 1m Suspension Kit
Material of Housing	Aluminium + PC
Material of Optics- Glare control	Microprismatic Diffuser
Operating Temperature	Operating Temperature: -15°C to 40°C
Lifetime	Reported L80 @ 85° >54,000 Hrs - As outlined within IESNA Standards, Projected Lifetime can be up to 6 x the reported lifetimes

Product Options

ATTRIBUTE	VALUES
Size - Length	Length: 1200mmL
Size - Height	Height: 64mmH

ATTRIBUTE	VALUES
Beam Angle	Beam Angle: 120°
Dimming Options	Non-Dimmable, TBC, DALI Dimmable
Accessories	Microwave Sensor, 1.2m Suspension Kit, 2.4m Suspension Kit, 1m Suspension Kit
Material of Housing	Aluminium + PC
Operating Temperature	Operating Temperature: -15°C to 40°C

Certification and Compliance

