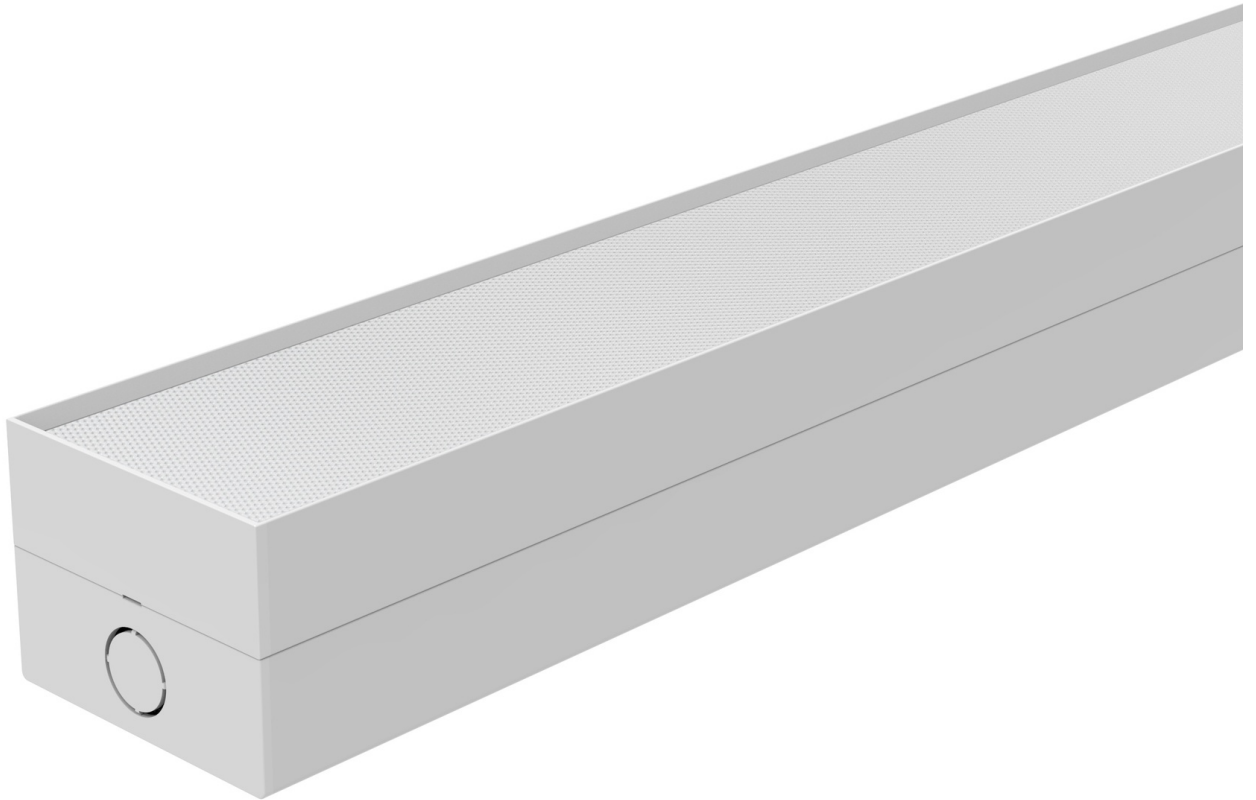


# Madura Series - 801500

[AES-25-BT510-05W-KN1-50X01]



## Technical Specifications

| ATTRIBUTE                           | VALUES  |
|-------------------------------------|---|
| Wattages                            | TBC, Wattage Selectable: 35W / 40W / 50W  |
| Efficacy                            | 120lm/W   |
| Correlated Colour Index (CRI)       | >80   |
| IP Rating                           | 65  |
| IK Rating                           | 08  |
| MacAdam Ellipse (SDCM)              | <5, <3  |
| Voltage                             | AC220-240V  |
| Light Source & Brand                | LED: SMD  |
| Driver                              | Driver: Boke Flicker Free   |
| Size - Length                       | Length: 1500mmL   |
| Size - Width                        | Width: 80mmW  |
| Size - Height                       | Height: 64mmH   |
| Mounting Options                    | Surface Mounted, Suspended, TBC   |
| Beam Angle                          | Beam Angle: 120°  |
| Dimming Options                     | Non-Dimmable, TBC, DALI Dimmable  |
| Correlated Colour Temperature (CCT) | CCT: 3000K, CCT: 4000K, CCT: 5000K, CCT: 6000K, CCT: 3CCT: 3000K+4000K+5000K  |
| Accessories                         | Microwave Sensor, 1.2m Suspension Kit, 2.4m Suspension Kit, 1m Suspension Kit   |
| Material of Housing                 | Aluminium + PC  |
| Material of Optics- Glare control   | Microprismatic Diffuser   |
| Operating Temperature               | Operating Temperature: -15°C to 40°C  |
| Lifetime                            | Reported L80 @ 85° >54,000 Hrs - As outlined within IESNA Standards, Projected Lifetime can be up to 6 x the reported lifetimes |

## Product Options

| ATTRIBUTE     | VALUES           |
|---------------|------------------|
| Size - Length | Length: 1500mmL  |
| Size - Height | Height: 64mmH    |
| Beam Angle    | Beam Angle: 120° |

| ATTRIBUTE             | VALUES  |
|-----------------------|---|
| Dimming Options       | Non-Dimmable, TBC, DALI Dimmable  |
| Accessories           | Microwave Sensor, 1.2m Suspension Kit, 2.4m Suspension Kit, 1m Suspension Kit |
| Material of Housing   | Aluminium + PC  |
| Operating Temperature | Operating Temperature: -15°C to 40°C  |

## Certification and Compliance

