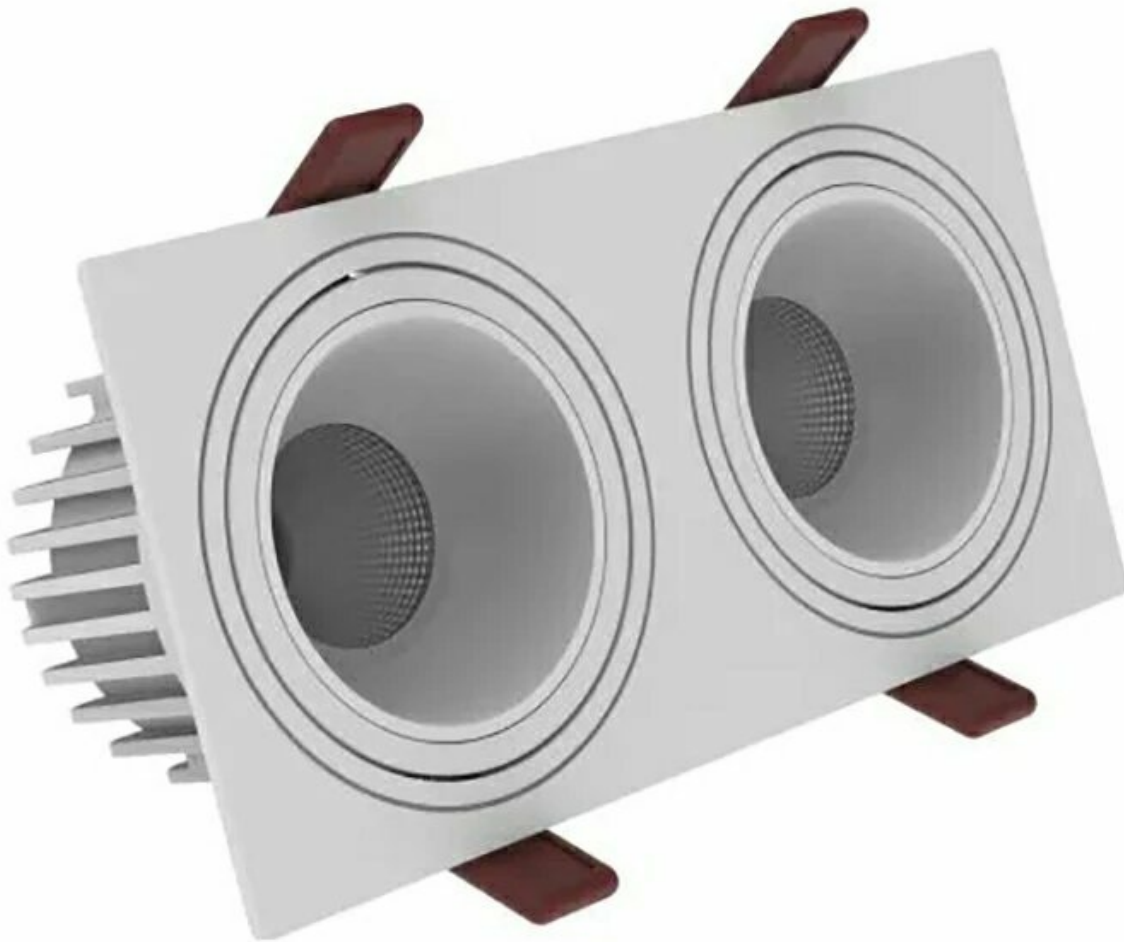


Waddington Duo Series - 18

[AES-15-YTLDSQ-218]



Technical Specifications

ATTRIBUTE	VALUES
Wattages	TBC, 2 x 12W (24W), 2 x 14W (28W), 2 x 16W (32W), 2 x 18W (36W)
Efficacy	90lm/W
Correlated Colour Index (CRI)	>80, >90, TBC
IP Rating	20, TBC
Voltage	AC220-240V
Light Source & Brand	LED: Cree COB
Size - Length	Length: 228mmL
Size - Width	Width: 120mmW
Size - Height	Height: 71mmH
Cut Out Size - Length	Cut Out: 205mmL
Cut Out Size - Width	Mounting Sleeve: 95mmW
Trim / Outer Colour	Trim/Outer: White, Trim/Outer: Black, Trim/Outer: Silver, Trim/Outer: Gold
Mounting Options	TBC, Recessed
Beam Angle	TBC, Beam Angle: 15°, Beam Angle: 30°, Beam Angle: 45°
Dimming Options	Non-Dimmable, Triac Dimmable, TBC, 0-10V Dimmable, DALI Dimmable
Correlated Colour Temperature (CCT)	CCT: 2700K, CCT: 3000K, CCT: 3500K, CCT: 4000K, CCT: 5000K, CCT: 5700K, CCT: 6500K
Lens Options	TBC, Injection Moulded Lens
Material of Housing	Housing Material: Aluminium
Operating Temperature	Operating Temperature: -15°C to 40°C

Product Options

ATTRIBUTE	VALUES
Size - Length	Length: 228mmL
Size - Height	Height: 71mmH
Cut Out Size - Length	Cut Out: 205mmL
Cut Out Size - Width	Mounting Sleeve: 95mmW
Beam Angle	TBC, Beam Angle: 15°, Beam Angle: 30°, Beam Angle: 45°
Dimming Options	Non-Dimmable, Triac Dimmable, TBC, 0-10V Dimmable, DALI Dimmable
Material of Housing	Housing Material: Aluminium

ATTRIBUTE	VALUES
Operating Temperature	Operating Temperature: -15°C to 40°C

Certification and Compliance

