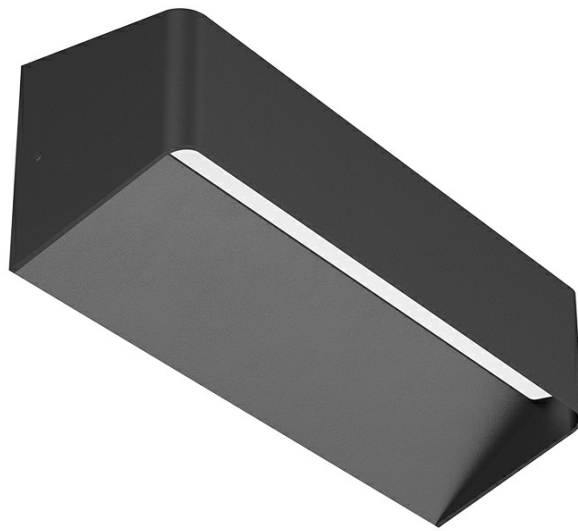


Laguna Series - 1510

[AES-27-WL16-1510]



Technical Specifications

ATTRIBUTE	VALUES
Wattages	TBC, 2 x 5W (10W)
Efficacy	50lm/W
Correlated Colour Index (CRI)	>80, TBC
MacAdam Ellipse (SDCM)	<6

ATTRIBUTE	VALUES
IP Rating	54, TBC
IK Rating	08
Voltage	AC220-240V
Light Source & Brand	LED: SMD
Driver	Driver: Built In
Size - Length	Length: 150mmL
Size - Width	Width: 100mmW
Size - Height	Height: 92mmH
Trim / Outer Colour	Trim/Outer: Black
Mounting Options	TBC, Wall Mounted
Beam Angle	TBC, Beam Angle: 100°
Dimming Options	Non-Dimmable, Triac Dimmable, TBC, 0-10V Dimmable, DALI Dimmable
Correlated Colour Temperature (CCT)	CCT: 3000K, CCT: 4000K, CCT: 5000K, CCT: 5700K
Material of Housing	Housing Material: Polycarbonate
Operating Temperature	Operating Temperature: -20°C to 45°C

Product Options

ATTRIBUTE	VALUES
Size - Length	Length: 150mmL
Size - Height	Height: 92mmH
Beam Angle	TBC, Beam Angle: 100°
Dimming Options	Non-Dimmable, Triac Dimmable, TBC, 0-10V Dimmable, DALI Dimmable
Material of Housing	Housing Material: Polycarbonate
Operating Temperature	Operating Temperature: -20°C to 45°C

Certification and Compliance

