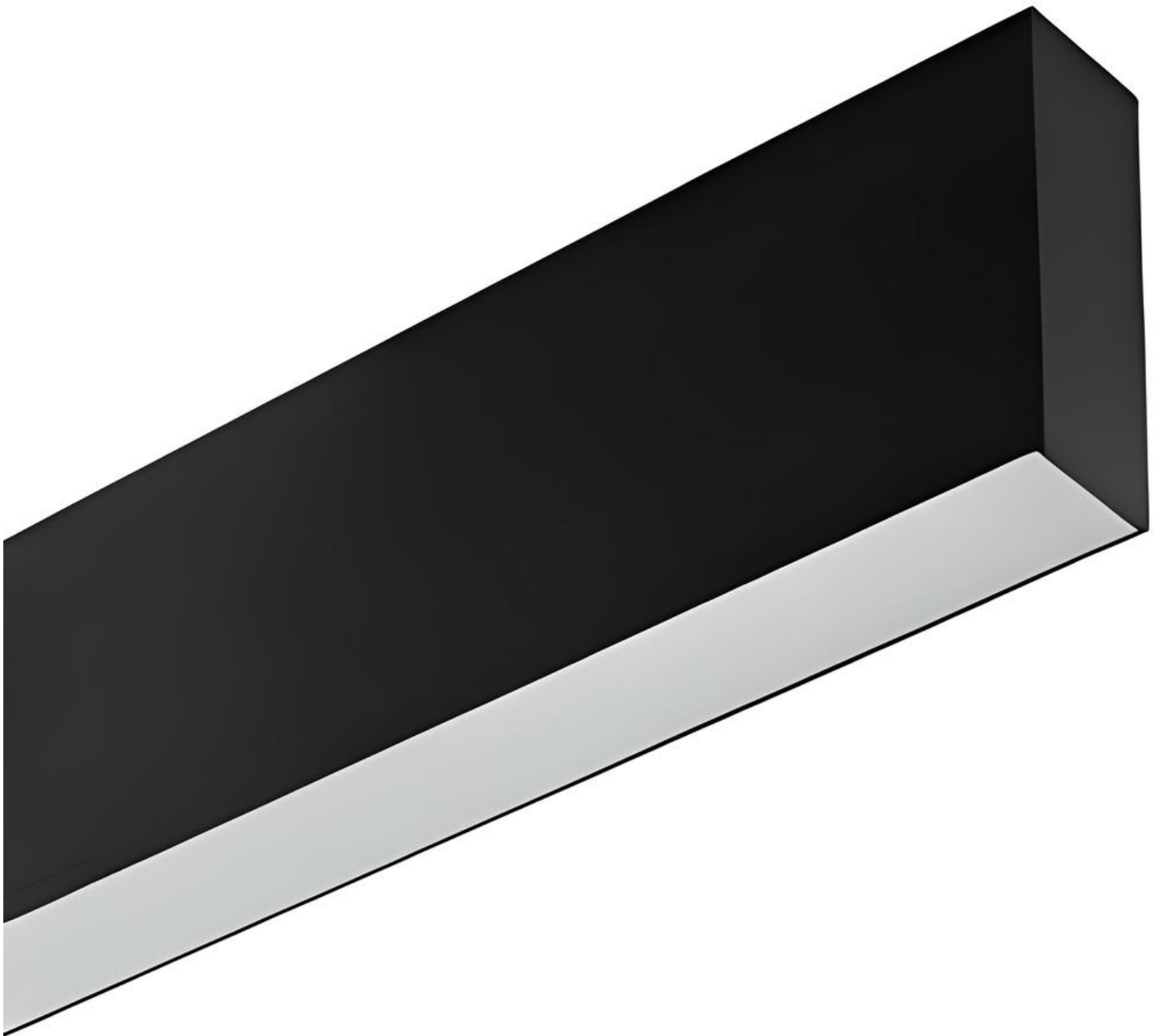


Wilga Series - 68100 - Up/Down

[AES-23-68100-UD]



Technical Specifications

ATTRIBUTE	VALUES
Up/Down Wattages	TBC, (18W/m Direct & 10W/m Indirect), (28W/m Direct & 10W/m Indirect), (38W/m Direct & 10W/m Indirect)
Efficacy	80lm/W, 105lm/W
Correlated Colour Index (CRI)	>80, >90, TBC
MacAdam Ellipse (SDCM)	<5, <3
IP Rating	20, TBC
Voltage	AC85-265V
Light Source & Brand	LED: Lumileds
Driver	Driver: Tridonic
Size - Width	Width: 68mmW
Size - Height	Height: 100mmH
Weight	3.2 kg/m \pm 5%
Beam Angle	TBC, Direct: 120° Indirect: 120°, Direct: 90° Indirect: 120°, Direct: 120° Indirect: Batwing, Direct: 90° Indirect: Batwing
Dimming Options	Non-Dimmable, TBC, 0-10V Dimmable, DALI Dimmable
Material of Housing	Housing Material: Aluminium
Lens Options	Polycarbonate Diffuser, TBC, MicroPrismatic Diffuser
Operating Temperature	Operating Temperature: -20°C to +45°C
Trim / Outer Colour	Trim/Outer: White, Trim/Outer: Black, Trim/Outer: Silver, Trim/Outer: Custom Colour
Correlated Colour Temperature (CCT)	CCT: 3000K, CCT: 4000K, CCT: 5000K
Mounting Options	Suspended, TBC, Rod Suspended
Lifetime	Reported L80 @ 85° >102,000 Hrs - As outlined within IESNA Standards, Projected Lifetime can be up to 6 x the reported lifetimes

Product Options

ATTRIBUTE	VALUES
Size - Height	Height: 100mmH
Beam Angle	TBC, Direct: 120° Indirect: 120°, Direct: 90° Indirect: 120°, Direct: 120° Indirect: Batwing, Direct: 90° Indirect: Batwing
Dimming Options	Non-Dimmable, TBC, 0-10V Dimmable, DALI Dimmable

ATTRIBUTE	VALUES
Material of Housing	Housing Material: Aluminium
Operating Temperature	Operating Temperature: -20°C to +45°C

Certification and Compliance

