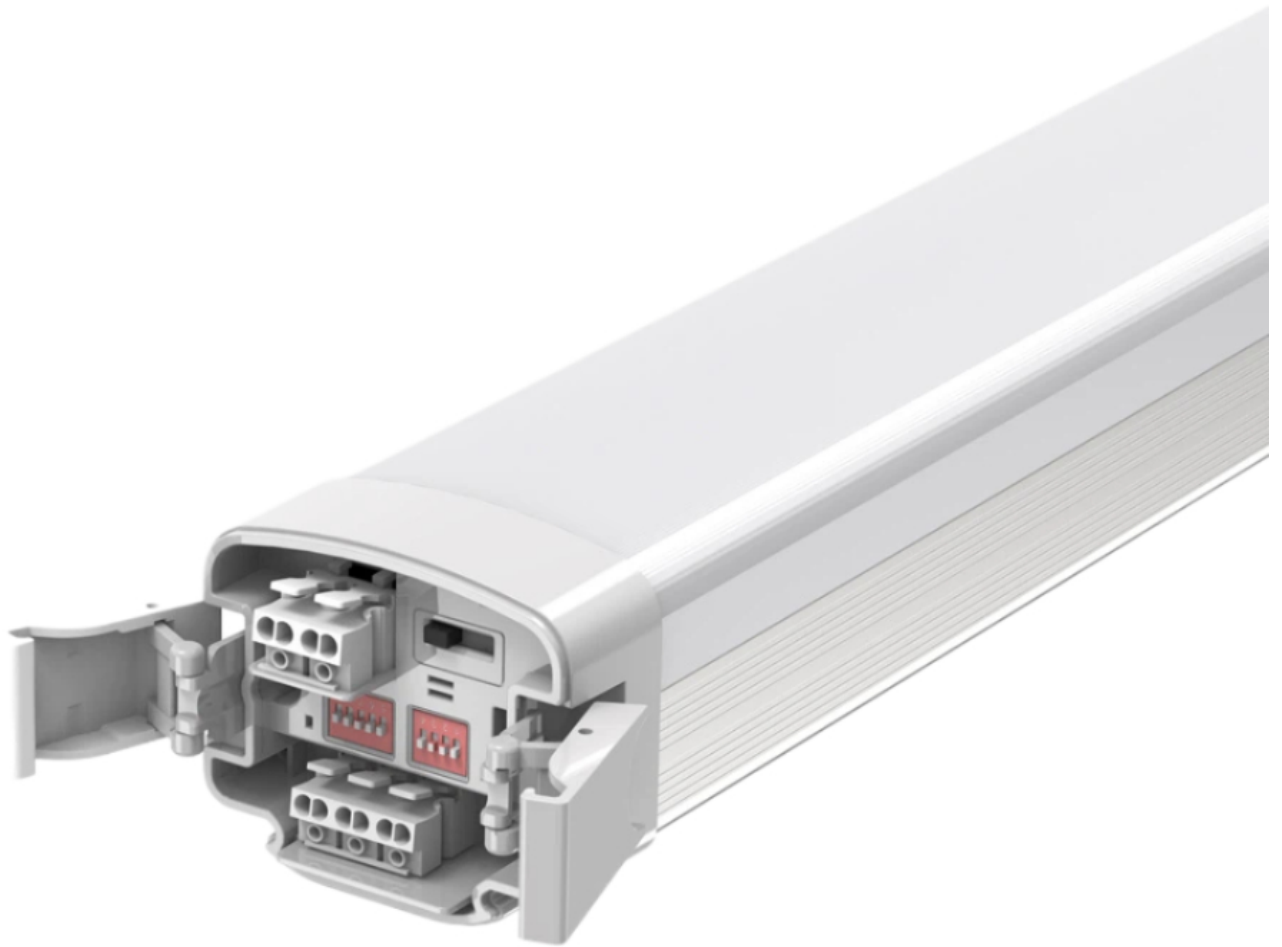


## Blanchview Series - 600



### Technical Specifications

| ATTRIBUTE                           | VALUES   |
|-------------------------------------|--|
| Wattages                            | 12W, TBC, 14W, 16W, 18W, 20W, 22W  |
| Efficacy                            | 120lm/W, 140lm/W, 160lm/W  |
| Correlated Colour Index (CRI)       | >80, TBC   |
| IP Rating                           | 65, TBC  |
| IK Rating                           | 10   |
| MacAdam Ellipse (SDCM)              | <5   |
| Voltage                             | AC220-240V   |
| Light Source & Brand                | LED: SMD   |
| Driver                              | Driver: BOKE   |
| Size - Length                       | Length: 625mmL   |
| Size - Width                        | Width: 85mmW   |
| Size - Height                       | Height: 73mmH  |
| Trim / Outer Colour                 | Trim/Outer: White  |
| Mounting Options                    | Surface Mounted, Suspended, TBC  |
| Beam Angle                          | TBC, Beam Angle: 120°  |
| Dimming Options                     | TBC, 0-10V Dimmable, 1-10V Dimmable, DALI Dimmable   |
| Correlated Colour Temperature (CCT) | CCT: 3000K, CCT: 4000K, CCT: 5000K, CCT: 6000K   |
| Accessories                         | Microwave Sensor, CCT Selectable Switch, 1.2m Suspension Kit, 2.4m Suspension Kit, Emergency |
| Material of Housing                 | Housing Material: Polycarbonate  |
| Operating Temperature               | Operating Temperature: -20°C to +40°C  |
| Weight                              | Weight: 6.5kg  |

## Product Options

| ATTRIBUTE       | VALUES   |
|-----------------|--|
| Size - Length   | Length: 625mmL                                     |
| Size - Height   | Height: 73mmH                                      |
| Beam Angle      | TBC, Beam Angle: 120°                              |
| Dimming Options | TBC, 0-10V Dimmable, 1-10V Dimmable, DALI Dimmable |

| ATTRIBUTE             | VALUES   |
|-----------------------|--|
| Accessories           | Microwave Sensor, CCT Selectable Switch, 1.2m Suspension Kit, 2.4m Suspension Kit, Emergency |
| Material of Housing   | Housing Material: Polycarbonate  |
| Operating Temperature | Operating Temperature: -20°C to +40°C  |

## Certification and Compliance

