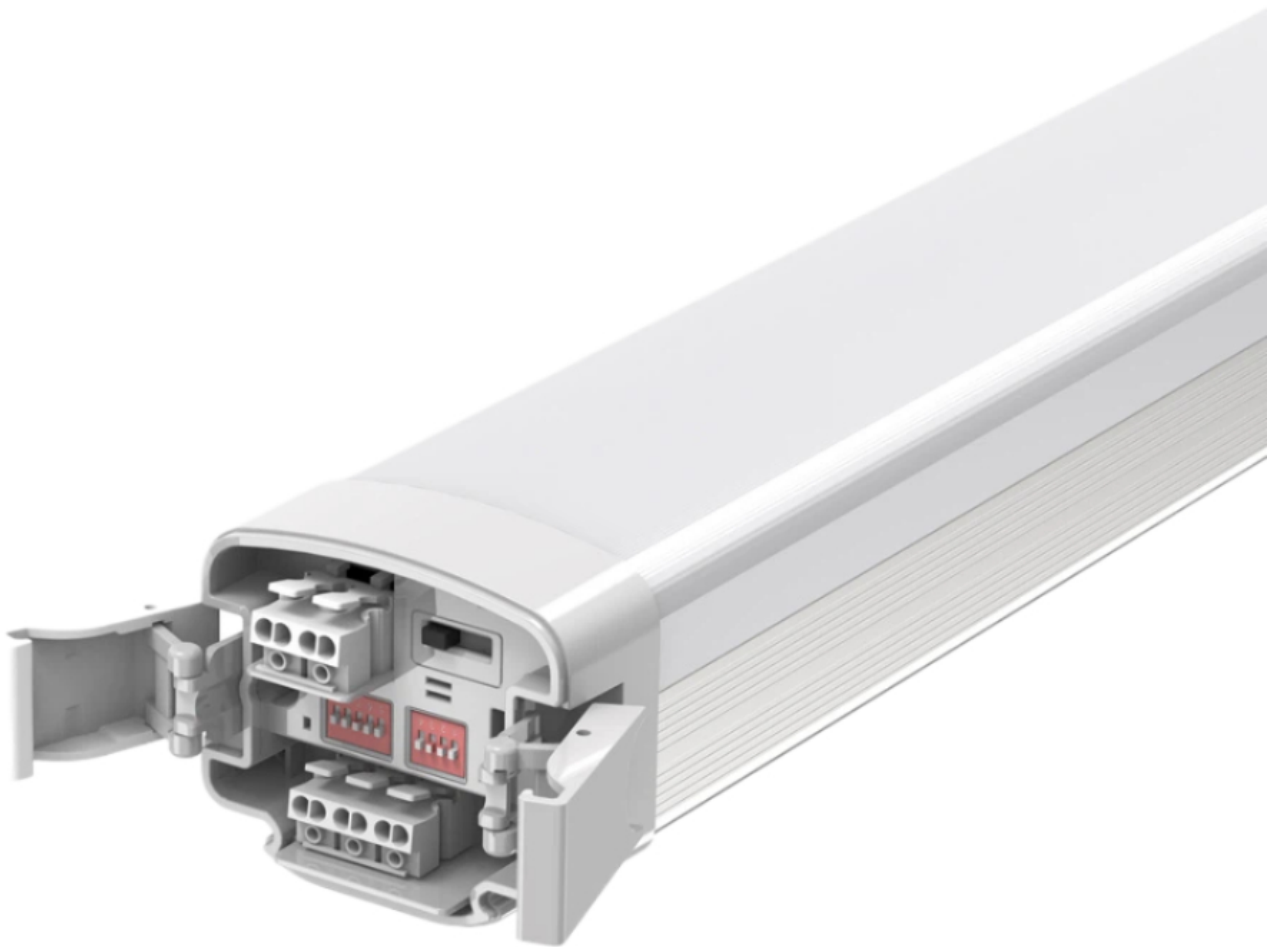


Blanchview Series - 2400

[AES-25-TR100-08]



Technical Specifications

ATTRIBUTE	VALUES
Wattages	TBC, 60W, 62W, 64W, 66W, 68W, 70W, 72W, 74W, 76W, 78W, 80W, 82W, 84W, 86W, 88W, 90W, 92W, 94W, 96W, 98W, 100W
Efficacy	120lm/W, 140lm/W, 160lm/W
Correlated Colour Index (CRI)	>80, TBC
IP Rating	65, TBC
IK Rating	10
MacAdam Ellipse (SDCM)	<5
Voltage	AC220-240V
Light Source & Brand	LED: SMD
Driver	Driver: BOKE
Size - Length	Length: 2400mmL
Size - Width	Width: 85mmW
Size - Height	Height: 73mmH
Trim / Outer Colour	Trim/Outer: White
Mounting Options	Surface Mounted, Suspended, TBC
Beam Angle	TBC, Beam Angle: 120°
Dimming Options	TBC, 0-10V Dimmable, 1-10V Dimmable, DALI Dimmable
Correlated Colour Temperature (CCT)	CCT: 3000K, CCT: 4000K, CCT: 5000K, CCT: 6000K
Accessories	Microwave Sensor, CCT Selectable Switch, 1.2m Suspension Kit, 2.4m Suspension Kit, Emergency
Material of Housing	Housing Material: Polycarbonate
Operating Temperature	Operating Temperature: -20°C to +40°C
Weight	Weight: 19kg

Product Options

ATTRIBUTE	VALUES
Size - Length	Length: 2400mmL
Size - Height	Height: 73mmH
Beam Angle	TBC, Beam Angle: 120°

ATTRIBUTE	VALUES
Dimming Options	TBC, 0-10V Dimmable, 1-10V Dimmable, DALI Dimmable
Accessories	Microwave Sensor, CCT Selectable Switch, 1.2m Suspension Kit, 2.4m Suspension Kit, Emergency
Material of Housing	Housing Material: Polycarbonate
Operating Temperature	Operating Temperature: -20°C to +40°C

Certification and Compliance

